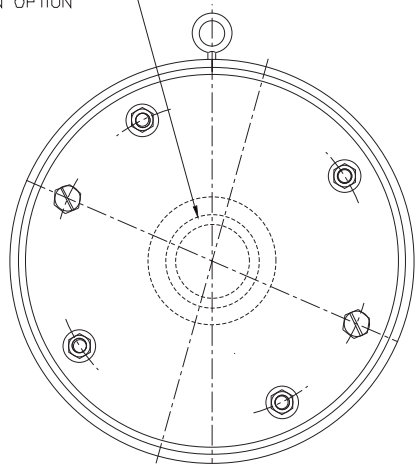
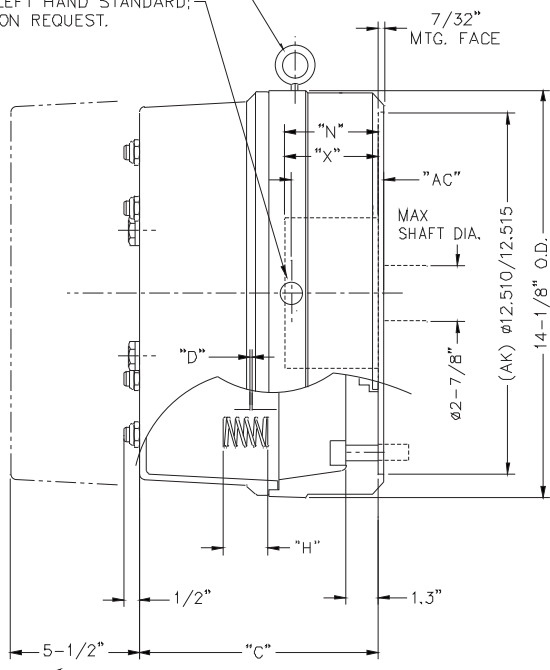


"THROUGH SHAFT"
COVER AVAILABLE AS
AN OPTION



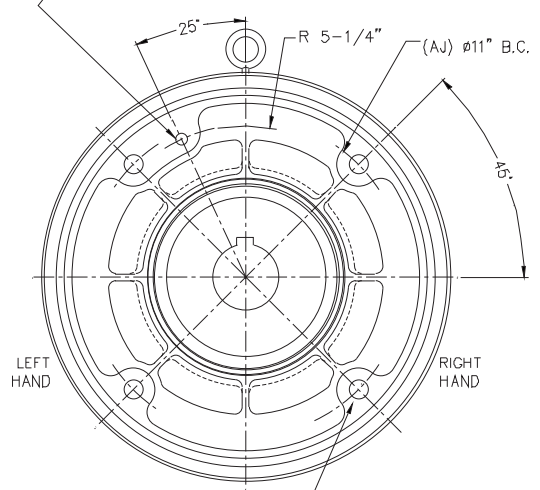
1/2" NPT LEADWIRE OUTLET FOR EXTERNAL
CONNECTION TO MOTOR, LEFT HAND STANDARD;
RIGHT HAND UPON REQUEST.

EYE BOLT
LIFTING LUG



CLEARANCE REQUIRED
TO REMOVE COVER

ø1/2" INTERNAL LEAD
WIRE HOLE (STANDARD)



(4) HOLES, EQUALLY SPACED,
FOR 5/8 DIA. SOC. HD. CAP SCREW.
LENGTH THRU BRACKET = 1.3"

SYMBOL KEY:

- "C" = ENCLOSURE LENGTH
- "D" = MAGNET AIR GAP
- "H" = INSTALLED SPRING LENGTH
- "N" = HUB LOCATION DIMENSION
- "X" = OVERALL HUB LENGTH
- "AC" = EXTERNAL WIRING OUTLET DIMENSION

**** FOR SMART BRAKE OPTION OUTLINE SEE L090195

MODEL NUMBER	TORQUE LB.FT.	No. OF ROTATING FRICTION DISCS	MAX. RPM	INERTIA WK ² LB.F.T. ²	DIMENSIONS							ENCLOSURE MATERIAL
					"C"	"D"		"H"	"N"	"X"	"AC"	
						MAX.	±.005 ORIGINAL SETTING					
92125-50	125	2	2400	1.0	7.66	.080	.035	1.38	2.31	2.31	2.19	CAST IRON
92180-50	180	2	2400	1.0	7.66	.070	.035	1.19	2.31	2.31	2.19	CAST IRON
93230-50	230	3	2400	1.3	8.03	.080	.040	1.31	2.94	2.94	2.19	CAST IRON
93270-50	270	3	2400	1.3	8.03	.070	.040	1.19	2.94	2.94	2.19	CAST IRON
94330-50	330	4	2400	1.6	8.66	.070	.045	1.25	3.56	3.56	3.44	CAST IRON
94360-50	360	4	2400	1.6	8.66	.070	.045	1.19	3.56	3.56	3.44	CAST IRON
95450-50	450	5	2400	1.9	9.28	.070	.050	1.19	4.19	4.19	4.06	CAST IRON

THIS MATERIAL IS PROPERTY OF IDINEX COMPANY. NO RIGHTS ARE GRANTED TO USE SUCH MATERIAL FOR ANY PURPOSE OTHER THAN (1) PRODUCT EVALUATION OR MAINTENANCE OR (2) THE FURNISHING OF SERVICES AND SUPPLIES TO THE IDINEX COMPANY.

OUTLINE DRAWING, 90 SERIES BRAKE, NEMA 2
New90 (S9050)

TOLERANCE UNLESS OTHERWISE NOTED
DIM 2 DEC FRACTIONS 1/32
DIM 3 DEC FRACTIONS 1/64
DIM 4 DEC FRACTIONS 1/128
DIM 5 DEC FRACTIONS 1/256
DIM 6 DEC FRACTIONS 1/512
DIM 7 DEC FRACTIONS 1/1024
DIM 8 DEC FRACTIONS 1/2048
DIM 9 DEC FRACTIONS 1/4096
DIM 10 DEC FRACTIONS 1/8192
DIM 11 DEC FRACTIONS 1/16384
DIM 12 DEC FRACTIONS 1/32768
DIM 13 DEC FRACTIONS 1/65536
DIM 14 DEC FRACTIONS 1/131072
DIM 15 DEC FRACTIONS 1/262144
DIM 16 DEC FRACTIONS 1/524288
DIM 17 DEC FRACTIONS 1/1048576
DIM 18 DEC FRACTIONS 1/2097152
DIM 19 DEC FRACTIONS 1/4194304
DIM 20 DEC FRACTIONS 1/8388608
DIM 21 DEC FRACTIONS 1/16777216
DIM 22 DEC FRACTIONS 1/33554432
DIM 23 DEC FRACTIONS 1/67108864
DIM 24 DEC FRACTIONS 1/134217728
DIM 25 DEC FRACTIONS 1/268435456
DIM 26 DEC FRACTIONS 1/536870912
DIM 27 DEC FRACTIONS 1/1073741824
DIM 28 DEC FRACTIONS 1/2147483648
DIM 29 DEC FRACTIONS 1/4294967296
DIM 30 DEC FRACTIONS 1/8589934592
DIM 31 DEC FRACTIONS 1/17179869184
DIM 32 DEC FRACTIONS 1/34359738368
DIM 33 DEC FRACTIONS 1/68719476736
DIM 34 DEC FRACTIONS 1/137438953472
DIM 35 DEC FRACTIONS 1/274877906944
DIM 36 DEC FRACTIONS 1/549755813888
DIM 37 DEC FRACTIONS 1/1099511627776
DIM 38 DEC FRACTIONS 1/2199023255552
DIM 39 DEC FRACTIONS 1/4398046511104
DIM 40 DEC FRACTIONS 1/8796093022208
DIM 41 DEC FRACTIONS 1/17592186044416
DIM 42 DEC FRACTIONS 1/35184372088832
DIM 43 DEC FRACTIONS 1/70368744177664
DIM 44 DEC FRACTIONS 1/140737488355328
DIM 45 DEC FRACTIONS 1/281474976710656
DIM 46 DEC FRACTIONS 1/562949953421312
DIM 47 DEC FRACTIONS 1/1125899906842624
DIM 48 DEC FRACTIONS 1/2251799813685248
DIM 49 DEC FRACTIONS 1/4503599627370496
DIM 50 DEC FRACTIONS 1/9007199254740992
DIM 51 DEC FRACTIONS 1/18014398509481984
DIM 52 DEC FRACTIONS 1/36028797018963968
DIM 53 DEC FRACTIONS 1/72057594037927936
DIM 54 DEC FRACTIONS 1/144115188075855872
DIM 55 DEC FRACTIONS 1/288230376151711744
DIM 56 DEC FRACTIONS 1/576460752303423488
DIM 57 DEC FRACTIONS 1/1152921504606846976
DIM 58 DEC FRACTIONS 1/2305843009213693952
DIM 59 DEC FRACTIONS 1/4611686018427387904
DIM 60 DEC FRACTIONS 1/9223372036854775808
DIM 61 DEC FRACTIONS 1/18446744073709551616
DIM 62 DEC FRACTIONS 1/36893488147419103232
DIM 63 DEC FRACTIONS 1/73786976294838206464
DIM 64 DEC FRACTIONS 1/147573952589676412928
DIM 65 DEC FRACTIONS 1/295147905179352825856
DIM 66 DEC FRACTIONS 1/590295810358705651712
DIM 67 DEC FRACTIONS 1/1180591620717411303424
DIM 68 DEC FRACTIONS 1/2361183241434822606848
DIM 69 DEC FRACTIONS 1/4722366482869645213696
DIM 70 DEC FRACTIONS 1/9444732965739290427392
DIM 71 DEC FRACTIONS 1/18889465931478580854784
DIM 72 DEC FRACTIONS 1/37778931862957161709568
DIM 73 DEC FRACTIONS 1/75557863725914323419136
DIM 74 DEC FRACTIONS 1/151115727451828646838272
DIM 75 DEC FRACTIONS 1/302231454903657293676544
DIM 76 DEC FRACTIONS 1/604462909807314587353088
DIM 77 DEC FRACTIONS 1/1208925819614629174706176
DIM 78 DEC FRACTIONS 1/2417851639229258349412352
DIM 79 DEC FRACTIONS 1/4835703278458516698824704
DIM 80 DEC FRACTIONS 1/9671406556917033397649408
DIM 81 DEC FRACTIONS 1/19342813113834066795298816
DIM 82 DEC FRACTIONS 1/38685626227668133590597632
DIM 83 DEC FRACTIONS 1/77371252455336267181195264
DIM 84 DEC FRACTIONS 1/154742504910672534362390528
DIM 85 DEC FRACTIONS 1/309485009821345068724781056
DIM 86 DEC FRACTIONS 1/618970019642690137449562112
DIM 87 DEC FRACTIONS 1/1237940039285380274899244224
DIM 88 DEC FRACTIONS 1/2475880078570760549798488448
DIM 89 DEC FRACTIONS 1/4951760157141521099596976896
DIM 90 DEC FRACTIONS 1/9903520314283042199193953792
DIM 91 DEC FRACTIONS 1/19807040628566084398387907584
DIM 92 DEC FRACTIONS 1/39614081257132168796775815168
DIM 93 DEC FRACTIONS 1/79228162514264337593551630336
DIM 94 DEC FRACTIONS 1/158456325028528751187103260672
DIM 95 DEC FRACTIONS 1/316912650057057502374206521344
DIM 96 DEC FRACTIONS 1/633825300114115004748413042688
DIM 97 DEC FRACTIONS 1/1267650600228230009496826085376
DIM 98 DEC FRACTIONS 1/2535301200456460018993652170752
DIM 99 DEC FRACTIONS 1/5070602400912920037987304341504
DIM 100 DEC FRACTIONS 1/10141204801825840075974608683008

DATE: 8-8-06
SCALE: 1/2"=1"

DRIVING IN: L090174
SHEET NO: 1 OF 1

B	2751	6-16-15	DBI	NEED ENGINEER SIGNATURE	DATE: 11-18-13	DBI	NEED 3 DESK: KELLS-TI, N, & D INKES	REVISED
A	2696	11-18-13	DBI	NEED 3 DESK: KELLS-TI, N, & D INKES	REVISED			
REV	DATE	BY	REVISION					