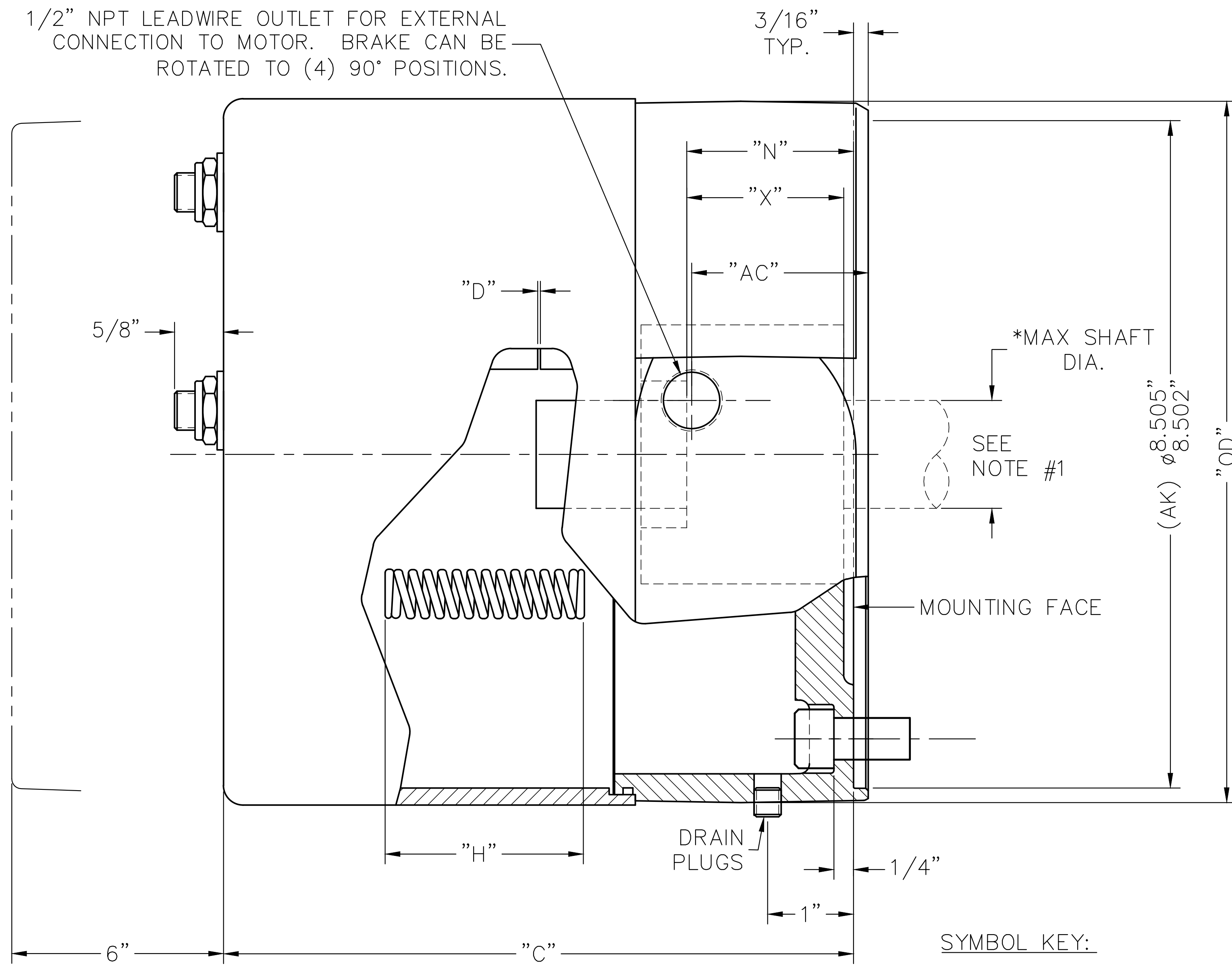


1/2" NPT LEADWIRE OUTLET FOR EXTERNAL CONNECTION TO MOTOR. BRAKE CAN BE ROTATED TO (4) 90° POSITIONS.



6" CLEARANCE REQUIRED TO REMOVE COVER

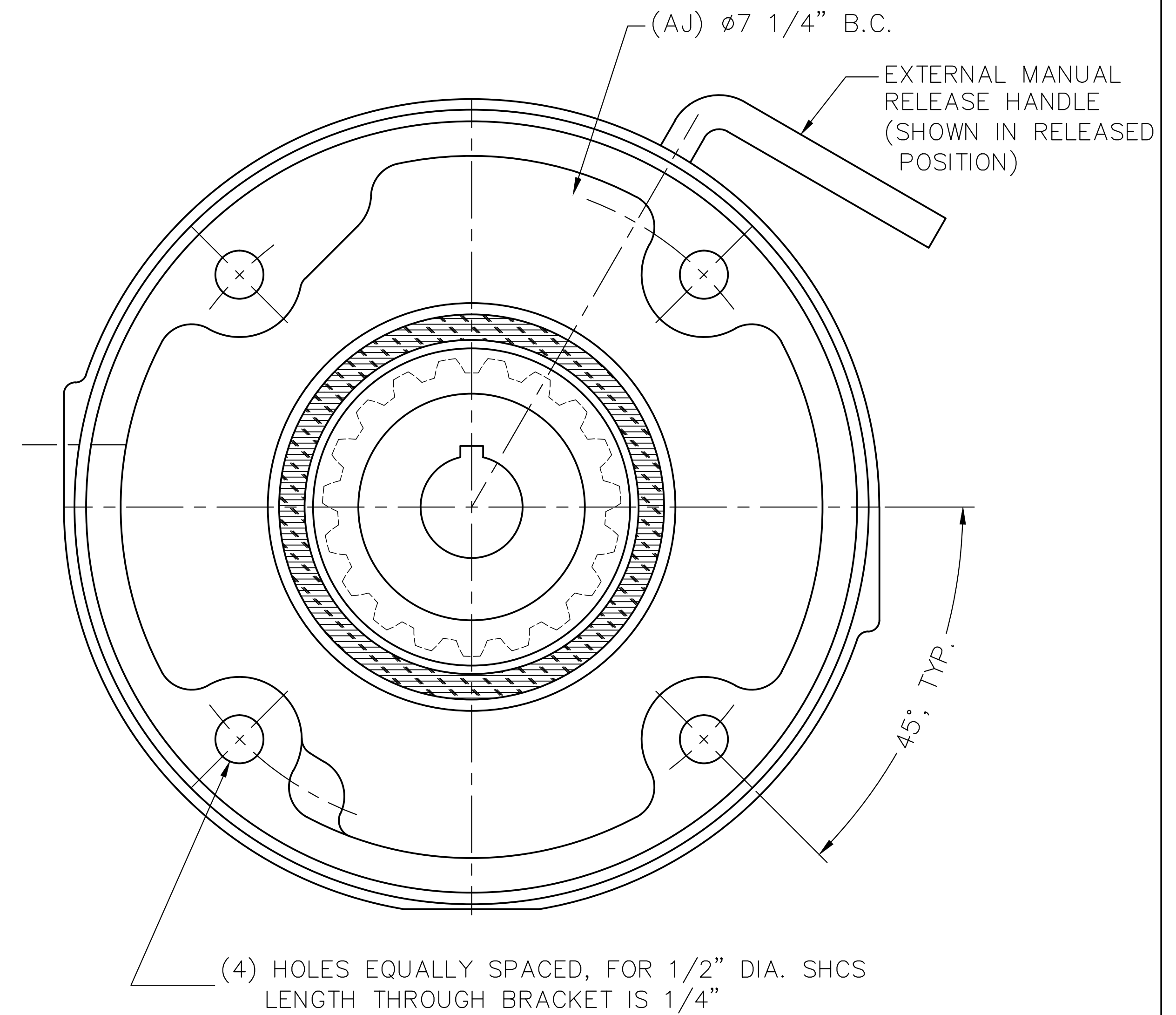
NOTE #1:
THE MAXIMUM SHAFT DIAMETER FOR THIS BRAKE IS $\phi 1-5/8$ " WITH STANDARD KEYWAY. MINIMUM (OR PILOT BORE) DIAMETER IS $\phi 3/4$ ".

*** CALCULATED USING H070394-001

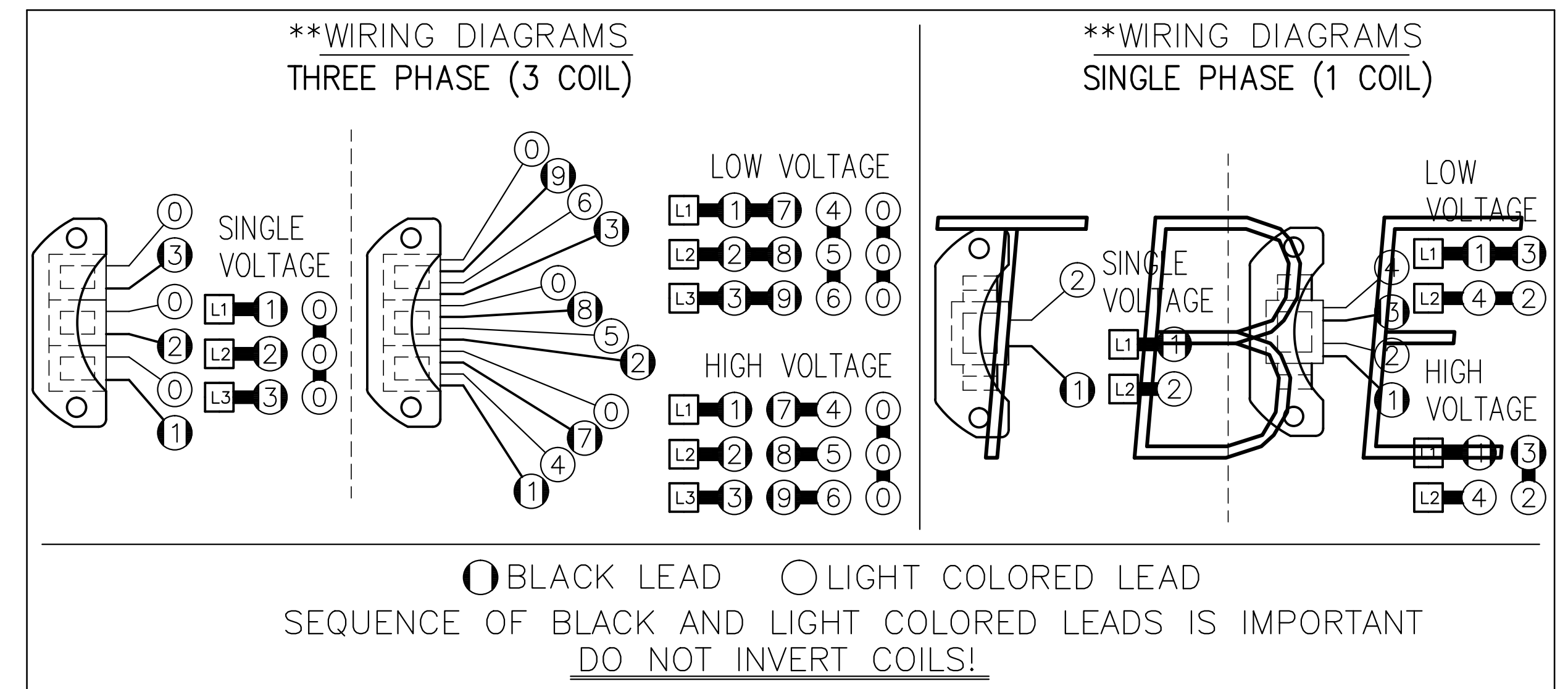
ENCLOSED HOUSING MODEL	TORQUE LB.FT.	No. OF ROTATING FRICTION DISCS	MAX. RPM	*** THERMAL CAPACITY HPS/MIN.	*** INERTIA WK ² LB.FT. ²	DIMENSIONS							ENCLOSURE MATERIAL	
						"C"	"D" ±.005 MAX. ORIGINAL SETTING	"H"	"N" ±1/32	"X"	"AC"	"OD"		
71010-SC6S	10	1	3600	****	.047	6.91	.100	.040	2.59	1.13	1.00	1.13	9.00	CAST IRON
71015-SC6S	15	1	3600	****	.047	6.91	.100	.040	2.41	1.13	1.00	1.13	9.00	CAST IRON
71025-SC6S	25	1	3600	****	.047	6.91	.100	.040	2.34	1.13	1.00	1.13	9.00	CAST IRON
72035-SC6S	35	2	3600	****	.067	6.91	.100	.040	2.34	1.13	1.00	1.13	9.00	CAST IRON
72050-SC6S	50	2	3600	****	.070	6.91	.100	.040	2.34	1.63	1.50	1.13	9.00	CAST IRON
73075-SC6S	75	3	3600	****	.095	7.47	.100	.050	2.34	1.63	1.50	1.69	9.00	CAST IRON
74105-SC6S	105	4	3600	****	.123	8.03	.100	.060	2.31	2.13	2.00	2.25	9.00	CAST IRON
74125-SC6S	125	4	3600	****	.123	8.03	.080	.060	2.19	2.13	2.00	2.25	9.00	CAST IRON

SYMBOL KEY:

"C" = ENCLOSURE LENGTH
 "D" = MAGNET AIR GAP
 "H" = INSTALLED SPRING LENGTH
 "N" = HUB LOCATION DIMENSION
 "X" = OVERALL HUB/SHAFT CONTACT LENGTH
 "AC" = EXTERNAL WIRING OUTLET DIMENSION
 "OD" = OUTER DIAMETER



(4) HOLES EQUALLY SPACED, FOR 1/2" DIA. SHCS LENGTH THROUGH BRACKET IS 1/4"



**SEE BULLETIN BK4773S FOR OPERATING, INSTALLATION AND PARTS INSTRUCTIONS

**** CONTACT FACTORY

THIS MATERIAL IS PROPERTY OF DINGS COMPANY. NO RIGHTS ARE GRANTED TO USE SUCH MATERIAL FOR ANY PURPOSE OTHER THAN (1) PRODUCT EVALUATION OR MAINTENANCE OR (2) THE FURNISHING OF SERVICES AND SUPPLIES TO THE DINGS COMPANY.

TITLE: OUTLINE DRAWING, 70 SERIES BRAKE (8700)
 IP56 (NEMA 4) WITH HUB SEAL; (S7SC6S)

TOLERANCE UNLESS OTHERWISE NOTED
 .000 ± FRACTIONS ±
 .00 ± ANGLES ±

DRN BY: DBM
 DATE: 10-16-13
 SCALE: FULL

CHD BY:
 SCALE: FULL

REFER TO: CAD FILE: L070463-1

DRAWING NO.: L070463
 SHEET: 1 OF 1
 REV. NO.:

DINGS DYNAMICS
 4740 WEST ELECTRIC AVE.
 MILWAUKEE, WISCONSIN 53219 U.S.A.

REV	CHG#	DATE	BY	REVISION

TBE