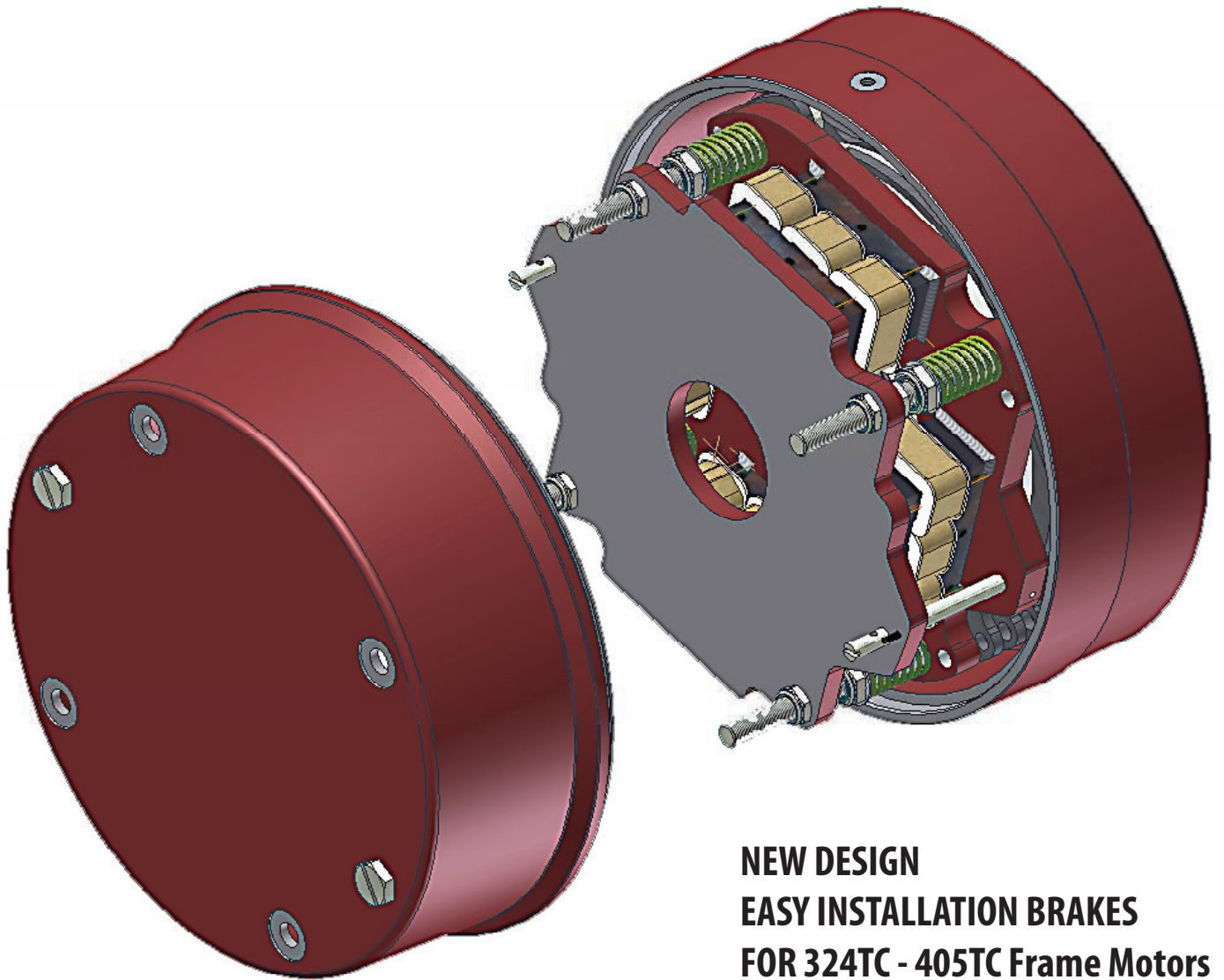
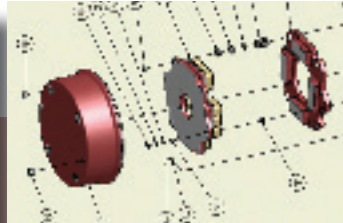
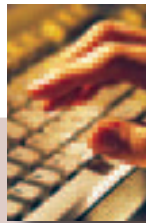


# Dings

**DIRECT-ACTING BRAKES**



**NEW DESIGN  
EASY INSTALLATION BRAKES  
FOR 324TC - 405TC Frame Motors**



## **NEW 90 SERIES**

Listening to our customers' needs and responding with new products, improved delivery, and competitive prices

# 90 Series End Mount

NEMA Frame Sizes 324TC through 405TC

Torque Ratings: 125 to 360 lb-ft

**EASY INSTALLATION – NO DISASSEMBLY REQUIRED TO INSTALL!**

**INSTALL IN 4 EASY STEPS:**

1. Place hub on motor shaft and tighten hub set screws.
2. Place brake on motor, guiding discs on hub.
3. Bolt brake to motor “C” face with four 5/8 inch socket head cap screws.
4. Connect coil leads and replace cover.

## Specifications:

Reaction Time: 20-25 milliseconds (release and set)  
 AK: 12.5" Register  
 AJ: 11" Bolt Circle  
 Thermal Capacity: 20 HPS/MIN  
 Maximum RPM: 2400

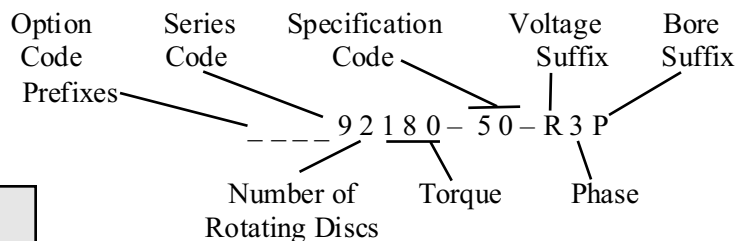
## Design Features:

Torque adjustable for specific applications  
 Splined hub  
 Coil insulation: Class H Standard  
 Spring set, electrically released  
 Lead wires for conduit connections  
 Manual release, automatic reset  
 CSA Approved File #LR13814

## Enclosure Types:

- ◆Dripproof Enclosure 90000-50
  - ◆NEMA 2, CSA 2, IP41
  - ◆Cast iron cover and bracket
- ◆Waterproof/Dusttight Enclosure 90000-51
  - ◆NEMA 4, CSA 4, IP56
  - ◆Cast iron cover and bracket
  - ◆Also available without hub seal for non-TEFC applications, model 90000-52

## Brake Model Number Definition



Standard Voltages (three phase):	
Suffix	Voltage
Y	110/220V, 50Hz
U	230/460V, 60 Hz or 190/380V, 50 Hz
R	115/230V, 60 Hz
T	220/440V, 60 Hz
P	575V, 60 Hz

Special voltages available.

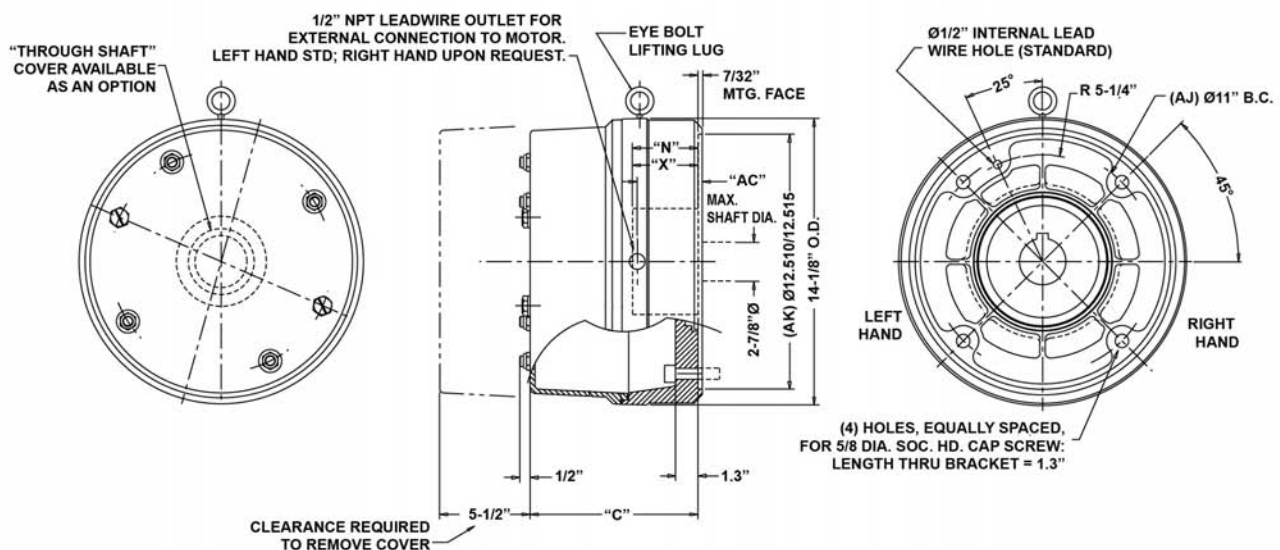
Standard Hub Bore Sizes:		
Suffix	Size	Keyway
O	2 1/8"	1/2" x 1/4"
P	2 3/8"	5/8" x 5/16"
Q	2 7/8"	3/4" x 3/8"

Special bore sizes available.

Available Options:	Prefix
Adapter to Larger Frame Size(s)	A
Reverse Adapter	AB
Foot Mounting Bracket	F
External Breather	K
Marine Duty (IEEE 45, CFR110.10-1)	M
Harsh Environment Protection	N
Tropical Protection	P
Internal Space Heater	R
Stainless Steel Stationary Disc	S
Through Shaft	T

Torque lb-ft	Model #	Instructions and Parts Manual	Enclosure	Construction	Wt. Lbs.	Inertia Wk <sup>2</sup> Lb-Ft <sup>2</sup>	Dimensions in inches				List Price
							C	N Hub Location	X Hub Length	AC Lead Outlet	
125	92125-50	BK4699	NEMA 2	Cast Iron	126	1.0	7.88	2.31	2.31	2.19	\$4,800
	92125-51	BK4696	NEMA 4	Cast Iron	128	1.0	7.88	2.31	2.31	2.19	\$6,250
180	92180-50	BK4699	NEMA 2	Cast Iron	126	1.0	7.88	2.31	2.31	2.19	\$5,150
	92180-51	BK4696	NEMA 4	Cast Iron	128	1.0	7.88	2.31	2.31	2.19	\$6,600
230	93230-50	BK4699	NEMA 2	Cast Iron	139	1.3	8.25	2.94	2.94	2.19	\$5,700
	93230-51	BK4696	NEMA 4	Cast Iron	139	1.3	8.25	2.94	2.94	2.19	\$7,150
270	93270-50	BK4699	NEMA 2	Cast Iron	139	1.3	8.25	2.94	2.94	2.19	\$6,350
	93270-51	BK4696	NEMA 4	Cast Iron	139	1.3	8.25	2.94	2.94	2.19	\$7,650
330	94330-50	BK4699	NEMA 2	Cast Iron	147	1.6	8.88	3.56	3.56	3.44	\$7,800
	94330-51	BK4696	NEMA 4	Cast Iron	149	1.6	8.88	3.56	3.56	3.44	\$8,800
360	94360-50	BK4699	NEMA 2	Cast Iron	147	1.6	8.88	3.56	3.56	3.44	\$8,050
	94360-51	BK4696	NEMA 4	Cast Iron	149	1.6	8.88	3.56	3.56	3.44	\$9,050

### OUTLINE DRAWING, NEMA 2 ENCLOSURE



### OUTLINE DRAWING, NEMA 4 ENCLOSURE

