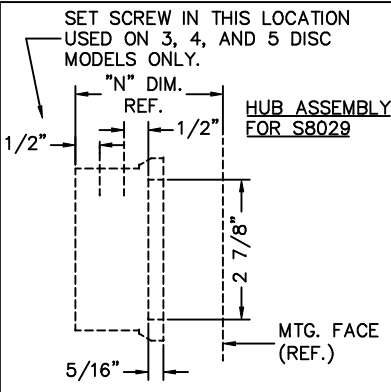
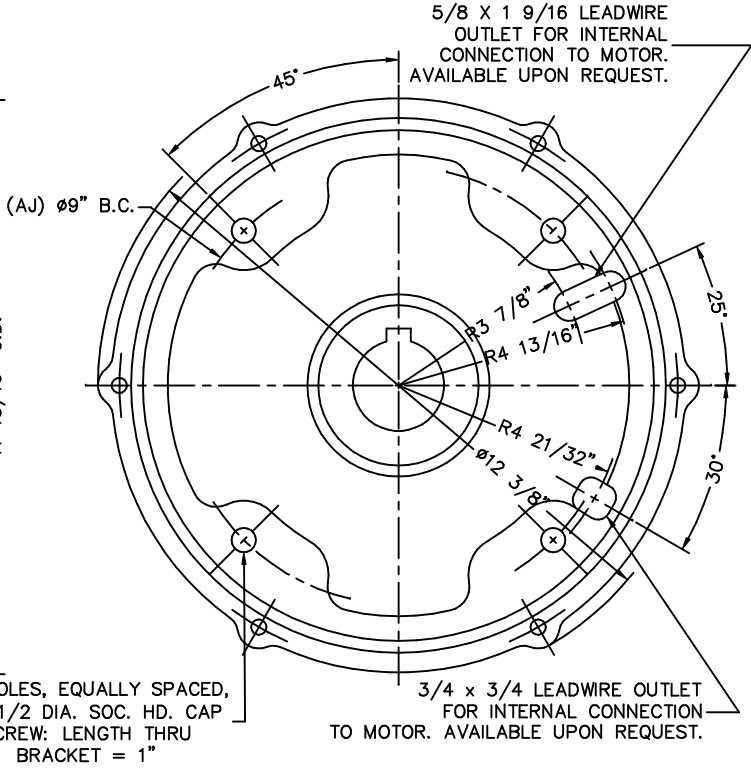
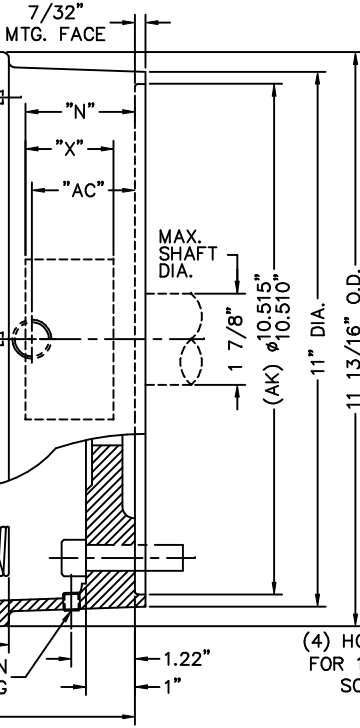
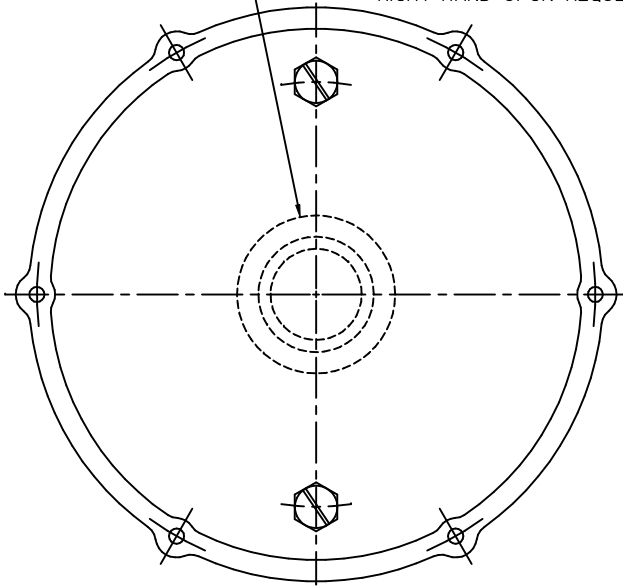


SEALED "THROUGH SHAFT" COVER AVAILABLE AS AN OPTION

1/2" NPT LEADWIRE OUTLET FOR EXTERNAL CONNECTION TO MOTOR. LEFT HAND STANDARD; RIGHT HAND UPON REQUEST.

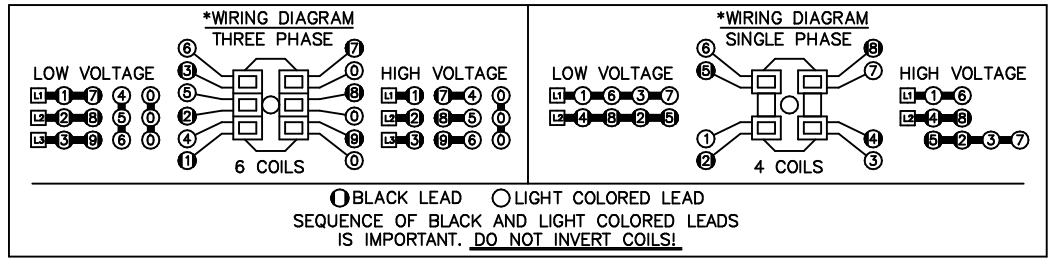


CLEARANCE REQUIRED TO REMOVE COVER

SYMBOL KEY:
 "C" = ENCLOSURE LENGTH
 "D" = MAGNET AIR GAP
 "H" = INSTALLED SPRING LENGTH
 "N" = HUB LOCATION DIMENSION
 "X" = OVERALL HUB LENGTH
 "AC" = EXTERNAL WIRING OUTLET DIMENSION

(4) HOLES, EQUALLY SPACED, FOR 1/2 DIA. SOC. HD. CAP SCREW: LENGTH THRU BRACKET = 1"

3/4 x 3/4 LEADWIRE OUTLET FOR INTERNAL CONNECTION TO MOTOR. AVAILABLE UPON REQUEST.



*SEE BULLETIN BK4814 FOR OPERATING, INSTALLATION AND PARTS INSTRUCTIONS

MODEL NUMBER W/O HUB SEAL	MODEL NUMBER W/HUB SEAL	TORQUE LB.FT.	No. OF ROTATING FRICTION DISCS	MAX. RPM	THERMAL CAPACITY HPS/MIN.	INERTIA WK ² LB.FT. ²	DIMENSIONS						ENCLOSURE MATERIAL		
							"C"	"D" ±.005		"H"	"N" ±1/32	"X"		"AC"	
								MAX.	ORIGINAL SETTING			MODEL -32			MODEL -29
6-81025-32	4-81025-29	25	1	2400	15	.095	6.37	.065	.035	1.31	1.75	1.00	1.31	1.50	CAST IRON
6-81035-32	4-81035-29	35	1	2400	15	.095	6.37	.065	.035	1.31	1.75	1.00	1.31	1.50	CAST IRON
6-82050-32	4-82050-29	50	2	2400	17	.169	7.00	.065	.035	1.31	2.25	1.50	1.81	2.12	CAST IRON
6-82070-32	4-82070-29	70	2	2400	17	.169	7.00	.065	.035	1.31	2.25	1.50	1.81	2.12	CAST IRON
6-83075-32	4-83075-29	75	3	2400	19	.244	7.62	.070	.040	1.31	2.75	2.00	2.31	2.75	CAST IRON
6-83105-32	4-83105-29	105	3	2400	19	.244	7.62	.070	.040	1.31	2.75	2.00	2.31	2.75	CAST IRON
6-84125-32	4-84125-29	125	4	2400	21	.318	8.25	.080	.050	1.43	3.25	2.50	2.81	3.38	CAST IRON
6-85175-32	4-85175-29	175	5	2400	21	.395	8.87	.080	.050	1.31	3.87	3.12	3.44	4.00	CAST IRON

THIS MATERIAL IS PROPERTY OF DISCO COMPANY. NO RIGHTS ARE GRANTED TO USE SUCH MATERIAL FOR ANY PURPOSE OTHER THAN (1) PRODUCT EVALUATION OR MAINTENANCE OR (2) THE FURNISHING OF SERVICES AND SUPPLIES TO THE DISCO COMPANY.

THIS OUTLINE DRAWING, 80 SERIES BRAKE, NEMA 4 NEMA 4; 4 POST (S8029), (S8032)

TOLERANCE UNLESS OTHERWISE NOTED
 .005 & .010 FRACTIONS & .005
 .005 & .010 UNLESS NOTED
 DISCO DYNAMICS
 MADE IN THE U.S.A.
 11/15/88
 3/4"=1"