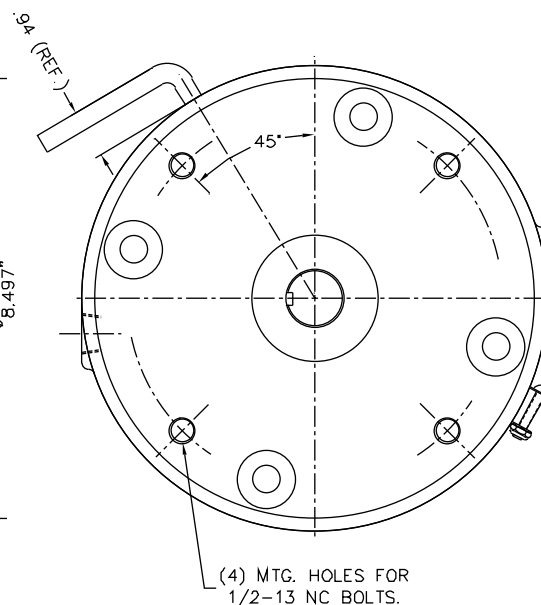
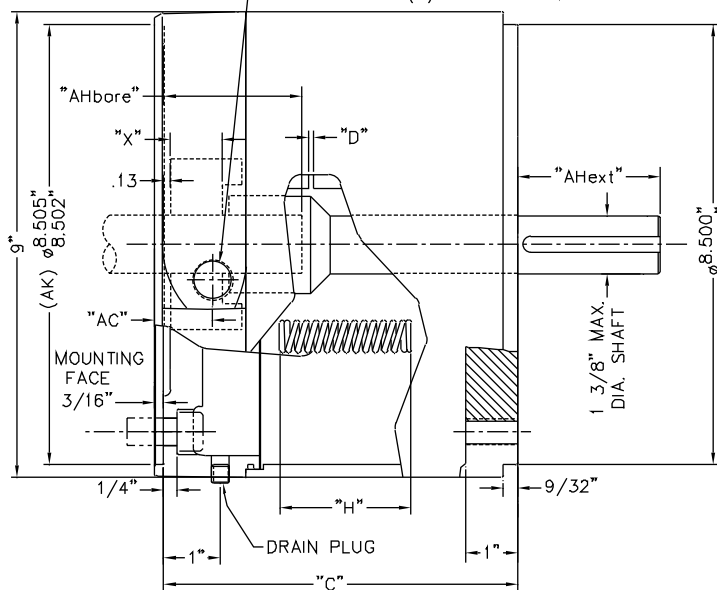


EXTERNAL MANUAL RELEASE HANDLE (SHOWN IN RELEASED POSITION)

$1/2"$ NPT LEADWIRE OUTLET FOR EXTERNAL CONNECTION TO MOTOR. BRAKE CAN BE ROTATED TO (4) 90° POSITIONS.



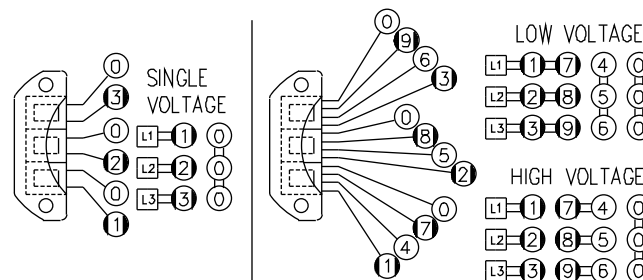
NOTE #1:
THE MAXIMUM SHAFT DIAMETER FOR THIS BRAKE IS $\phi 1-3/8"$ WITH STANDARD KEYWAY.

	"AHbore"(SHAFT LG.)			"AHext"(SHAFT LG.)		
	1.125 DIA.	1.375 DIA.	1.625 DIA.	1.125 DIA.	1.375 DIA.	1.625 DIA.
1 DISC	2.62	3.12	N/A	2.62	3.12	N/A
2 DISC						

SYMBOL KEY:

- "AC" = EXTERNAL WIRING OUTLET DIMENSION
- "AHbore" = MAX MOTOR SHAFT LENGTH
- "AHext" = SHAFT EXTENSION LENGTH
- "C" = ENCLOSURE LENGTH
- "D" = MAGNET AIR GAP
- "H" = INSTALLED SPRING LENGTH
- "X" = OVERALL HUB ENGAGEMENT LENGTH

****WIRING DIAGRAMS
THREE PHASE (3 COIL)**



○ BLACK LEAD ○ LIGHT COLORED LEAD
 SEQUENCE OF BLACK AND LIGHT COLORED LEADS IS IMPORTANT
DO NOT INVERT COILS!

*** CALCULATED USING H070394-001

**** CONTACT FACTORY

ENCLOSED HOUSING MODEL	TORQUE LB.FT.	No. OF ROTATING FRICTION DISCS	MAX. RPM	**** THERMAL CAPACITY HPS/MIN.	*** INERTIA WK ² LB.FT. ²	DIMENSIONS				ENCLOSURE MATERIAL	HOUSING MATERIAL
						"C"	"H"	"X"	"AC"		
71010-CE64	10	1	3600	****	.061	7.53	2.59	1.31	1.13	CAST IRON	ALUMINUM
71015-CE64	15	1	3600	****	.061	7.53	2.41	1.31	1.13	CAST IRON	ALUMINUM
71025-CE64	25	1	3600	****	.061	7.53	2.34	1.31	1.13	CAST IRON	ALUMINUM
72025-CE64	25	2	3600	****	.082	7.53	2.50	1.31	1.13	CAST IRON	ALUMINUM
72035-CE64	35	2	3600	****	.082	7.53	2.34	1.31	1.13	CAST IRON	ALUMINUM
72050-CE64	50	2	3600	****	.082	7.53	2.34	1.31	1.13	CAST IRON	ALUMINUM

1 PHASE "D" $\pm .005$		3 PHASE "D" $\pm .005$	
MAX.	ORIGINAL SETTING	MAX.	ORIGINAL SETTING
.125	.075	.100	.040
.125	.075	.100	.040
.125	.075	.100	.040
.125	.075	.100	.040
.125	.075	.100	.040