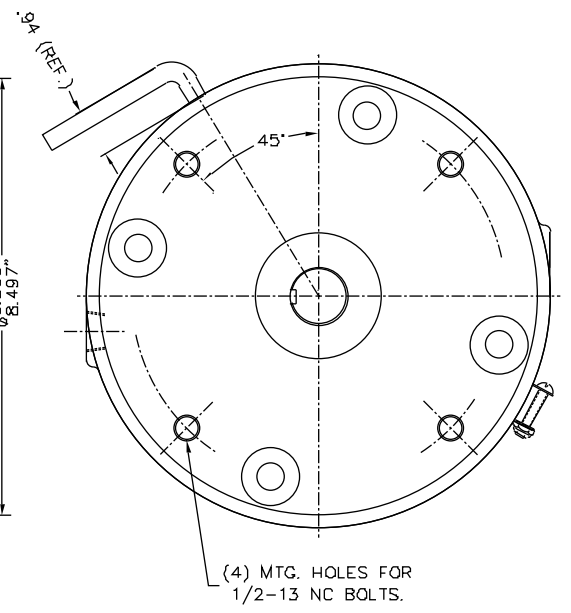
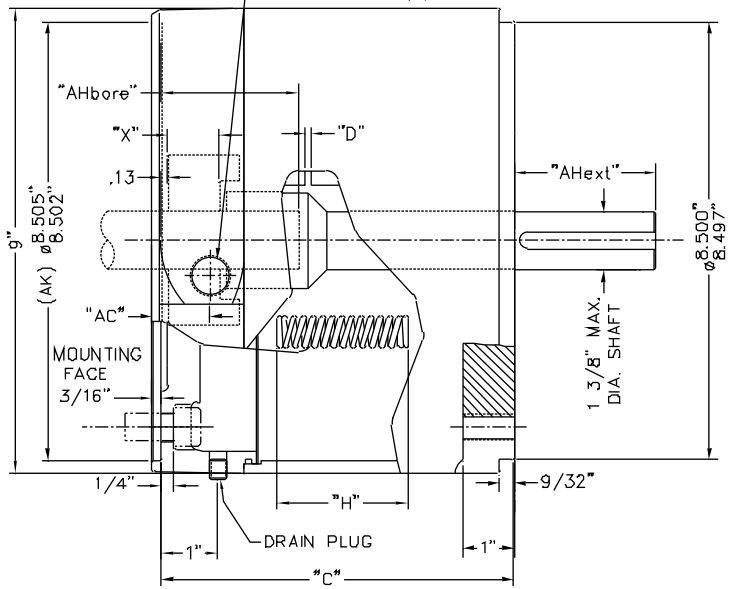


EXTERNAL MANUAL RELEASE HANDLE (SHOWN IN RELEASED POSITION)

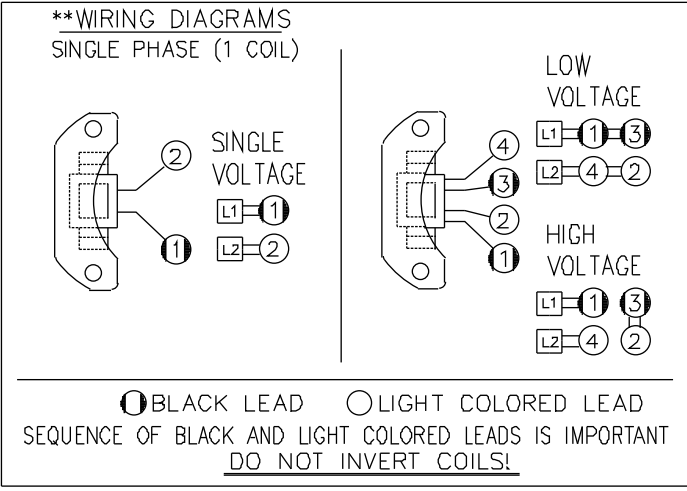
$1/2$ " NPT LEADWIRE OUTLET FOR EXTERNAL CONNECTION TO MOTOR. BRAKE CAN BE ROTATED TO (4) 90° POSITIONS.



NOTE #1:  
THE MAXIMUM SHAFT DIAMETER FOR THIS BRAKE IS  $\phi 1-3/8$ " WITH STANDARD KEYWAY.

SYMBOL KEY:  
 "AC" = EXTERNAL WIRING OUTLET DIMENSION  
 "AHbore" = MAX MOTOR SHAFT LENGTH  
 "AHext" = SHAFT EXTENSION LENGTH  
 "C" = ENCLOSURE LENGTH  
 "D" = MAGNET AIR GAP  
 "H" = INSTALLED SPRING LENGTH  
 "X" = OVERALL HUB ENGAGEMENT LENGTH

	"AHbore"(SHAFT LG.)			"AHext"(SHAFT LG.)		
	1.125 DIA.	1.375 DIA.	1.625 DIA.	1.125 DIA.	1.375 DIA.	1.625 DIA.
1 DISC						
2 DISC	2.62	3.12	N/A	2.62	3.12	N/A



\*\*\* CALCULATED USING H070394-001 \*\*\*\* CONTACT FACTORY

ENCLOSED HOUSING MODEL	TORQUE LB.FT.	No. OF ROTATING FRICTION DISCS	MAX. RPM	**** THERMAL CAPACITY HPS/MIN.	*** INERTIA WK <sup>2</sup> LB.FT.	DIMENSIONS				ENCLOSURE MATERIAL	HOUSING MATERIAL		
						"C"	"H"	"X"	"AC"				
						1 PHASE "D" ± .005		3 PHASE "D" ± .005					
71010-CE64	10	1	3600	****	.061	7.53	2.59	1.31	1.13	CAST IRON	ALUMINUM		
71015-CE64	15	1	3600	****	.061	7.53	2.41	1.31	1.13	CAST IRON	ALUMINUM		
71025-CE64	25	1	3600	****	.061	7.53	2.34	1.31	1.13	CAST IRON	ALUMINUM		
72025-CE64	25	2	3600	****	.082	7.53	2.50	1.31	1.13	CAST IRON	ALUMINUM		
72035-CE64	35	2	3600	****	.082	7.53	2.34	1.31	1.13	CAST IRON	ALUMINUM		
72050-CE64	50	2	3600	****	.082	7.53	2.34	1.31	1.13	CAST IRON	ALUMINUM		
										MAX.	ORIGINAL SETTING	MAX.	ORIGINAL SETTING
										.125	.075	.100	.040
										.125	.075	.100	.040
										.125	.075	.100	.040
										.125	.075	.100	.040
										.125	.075	.100	.040