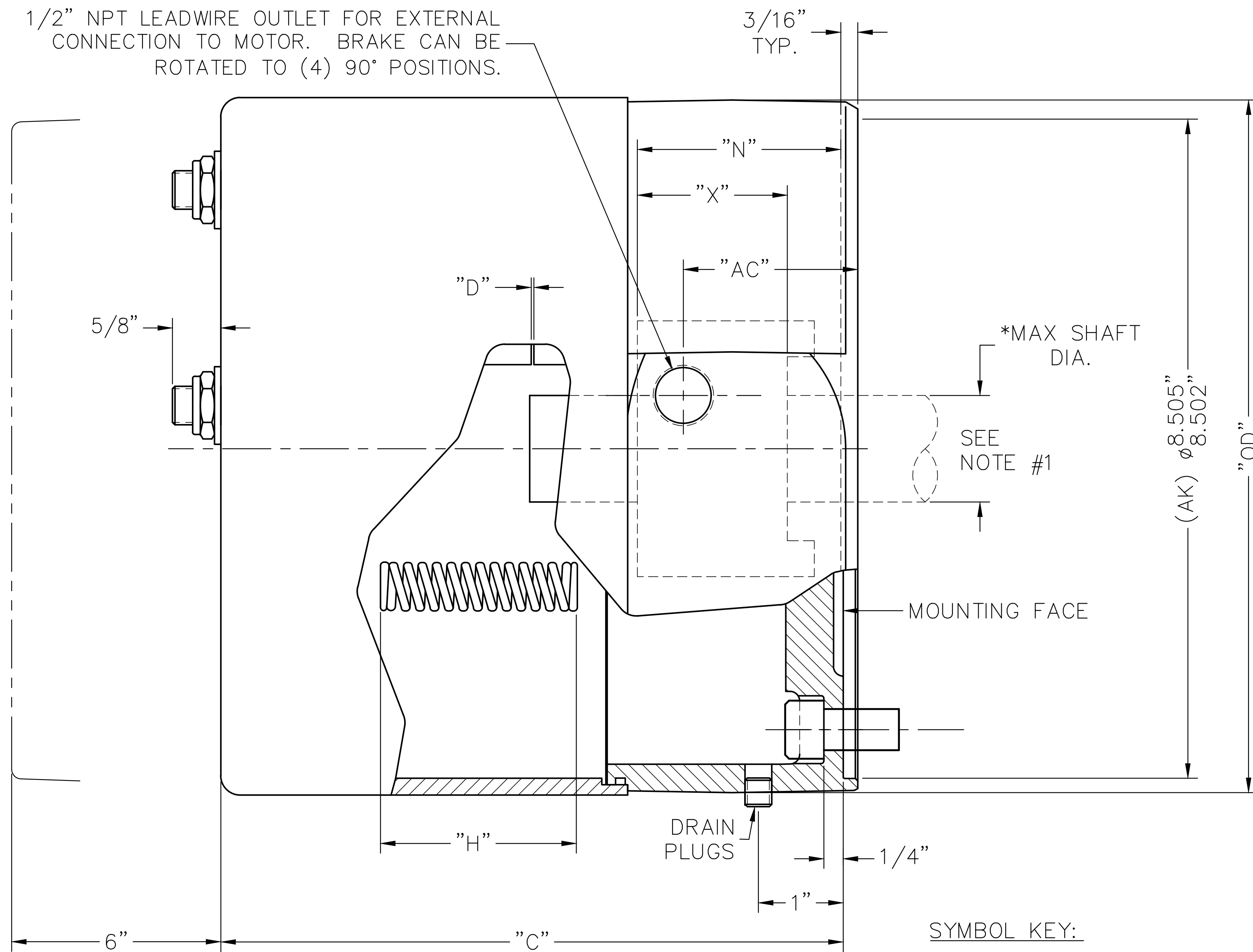


1/2" NPT LEADWIRE OUTLET FOR EXTERNAL CONNECTION TO MOTOR. BRAKE CAN BE ROTATED TO (4) 90° POSITIONS.

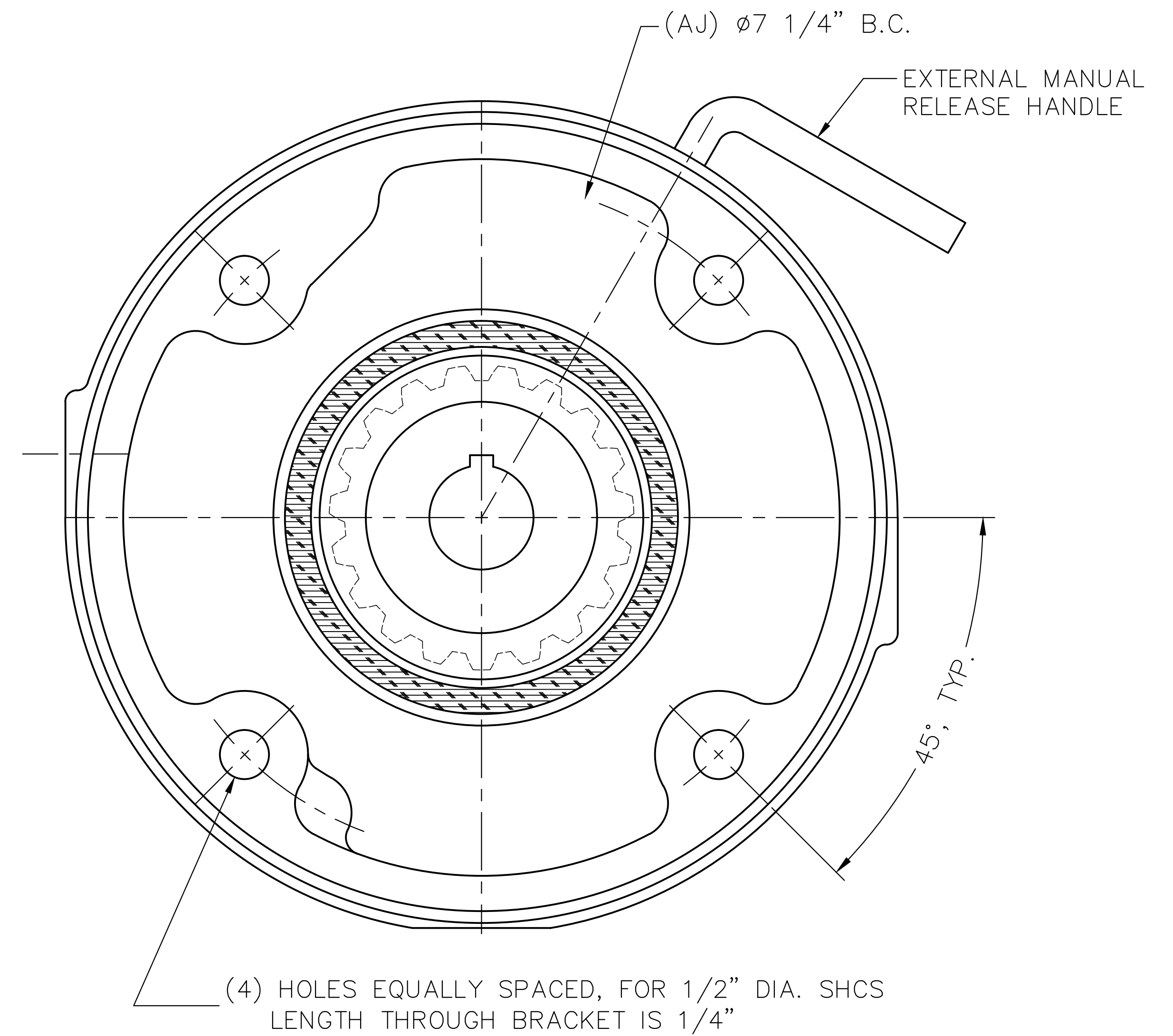


NOTE #1:
THE MAXIMUM SHAFT DIAMETER FOR THIS BRAKE IS $\phi 1-5/8$ " WITH STANDARD KEYWAY. MINIMUM (OR PILOT BORE) DIAMETER IS $\phi 3/4$ ".

*** CALCULATED USING H070394-001

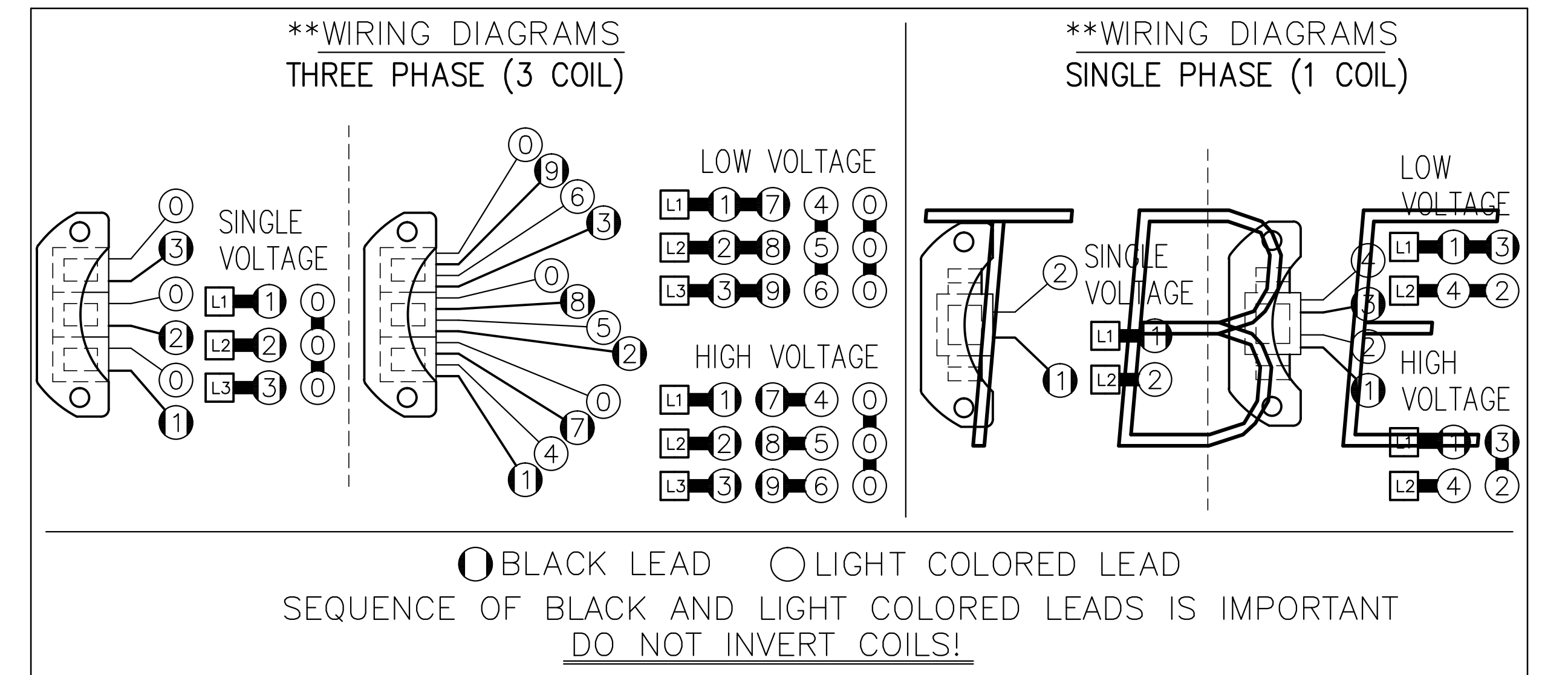
ENCLOSED HOUSING MODEL	TORQUE LB.FT.	No. OF ROTATING FRICTION DISCS	MAX. RPM	*** THERMAL CAPACITY HPS/MIN.	*** INERTIA WK ² LB.FT. ²	DIMENSIONS							ENCLOSURE MATERIAL	
						"C"	"D" $\pm .005$ MAX.	ORIGINAL SETTING	"H"	"N" $\pm 1/32$	"X"	"AC"		"OD"
71010-SC6T	10	1	3600	****	.047	6.91	.100	.040	2.59	1.13	1.00	1.13	9.00	CAST IRON
71015-SC6T	15	1	3600	****	.047	6.91	.100	.040	2.41	1.13	1.00	1.13	9.00	CAST IRON
71025-SC6T	25	1	3600	****	.047	6.91	.100	.040	2.34	1.13	1.00	1.13	9.00	CAST IRON
72035-SC6T	35	2	3600	****	.067	6.91	.100	.040	2.34	1.13	1.00	1.13	9.00	CAST IRON
72050-SC6T	50	2	3600	****	.070	6.91	.100	.040	2.34	1.63	1.50	1.13	9.00	CAST IRON
73075-SC6T	75	3	3600	****	.095	7.47	.100	.050	2.34	1.63	1.50	1.69	9.00	CAST IRON
74105-SC6T	105	4	3600	****	.123	8.03	.100	.060	2.31	2.13	2.00	2.25	9.00	CAST IRON
74125-SC6T	125	4	3600	****	.123	8.03	.080	.060	2.19	2.13	2.00	2.25	9.00	CAST IRON

TBE



SYMBOL KEY:

"C"= ENCLOSURE LENGTH
 "D"= MAGNET AIR GAP
 "H"= INSTALLED SPRING LENGTH
 "N"= HUB LOCATION DIMENSION
 "X"= OVERALL HUB/SHAFT CONTACT LENGTH
 "AC"= EXTERNAL WIRING OUTLET DIMENSION
 "OD"= OUTER DIAMETER



**SEE BULLETIN BK4774 FOR OPERATING, INSTALLATION AND PARTS INSTRUCTIONS

**** CONTACT FACTORY

THIS MATERIAL IS PROPERTY OF DINGS COMPANY. NO RIGHTS ARE GRANTED TO USE SUCH MATERIAL FOR ANY PURPOSE OTHER THAN (1) PRODUCT EVALUATION OR MAINTENANCE OR (2) THE FURNISHING OF SERVICES AND SUPPLIES TO THE DINGS COMPANY.

TITLE: OUTLINE DRAWING, 70 SERIES BRAKE (8700)
 IP56 (NEMA 4X) WITH HUB SEAL; (S7SC6T)

TOLERANCE UNLESS OTHERWISE NOTED
 .000 ± FRACTIONS ±
 .00 ± ANGLES ±

DRN BY: DBM
 DATE: 10-21-14
 SCALE: FULL

CHKD BY:
 DATE:
 SCALE:

4740 WEST ELECTRIC AVE.
 MILWAUKEE, WISCONSIN 53219 U.S.A.

DINGS DYNAMICS

DRAWING NO. L070539
 SHEET 1 OF 1
 REV. NO.

REFER TO CAD FILE: L070539-1

REV	CHG#	DATE	BY	REVISION