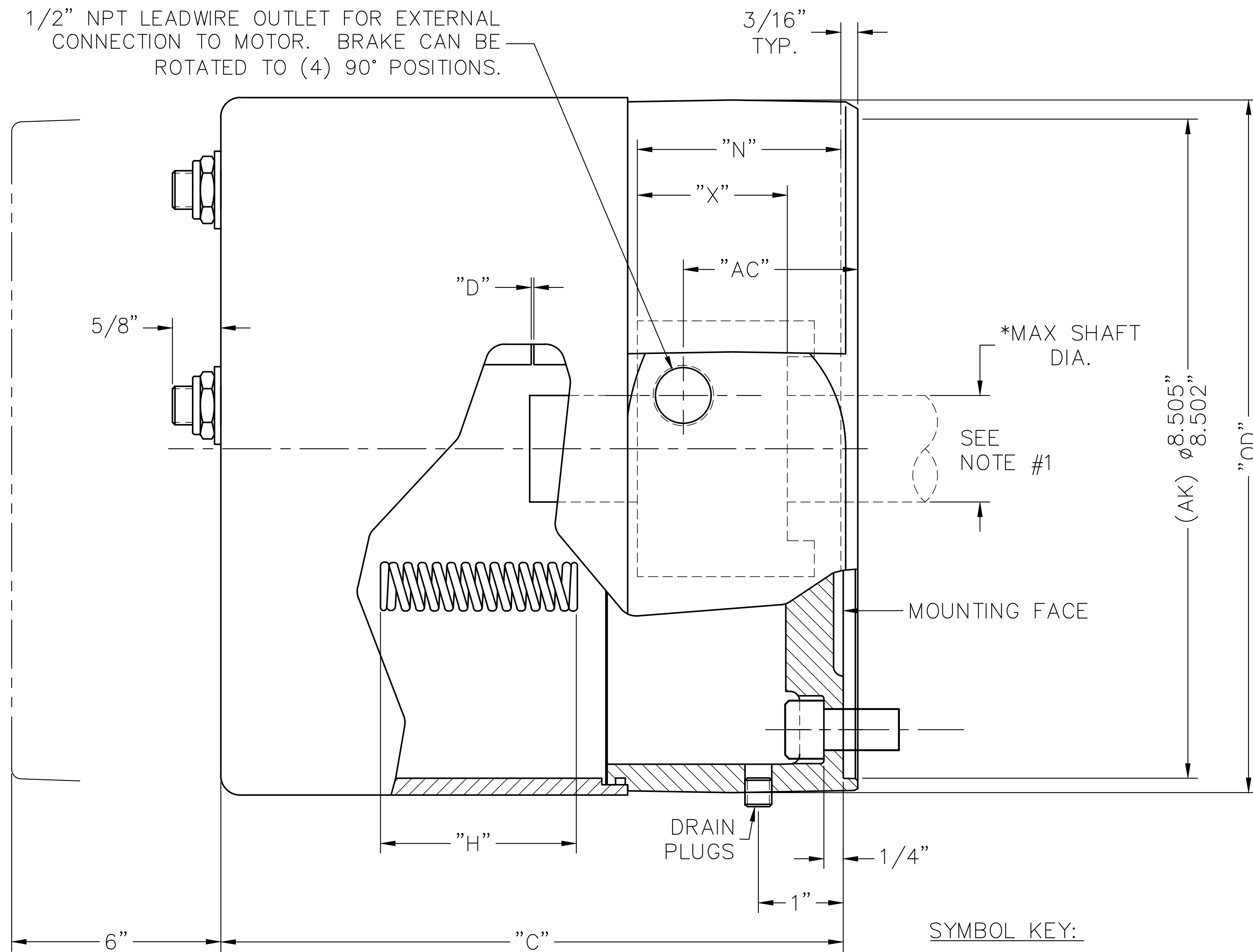


1/2" NPT LEADWIRE OUTLET FOR EXTERNAL CONNECTION TO MOTOR. BRAKE CAN BE ROTATED TO (4) 90° POSITIONS.



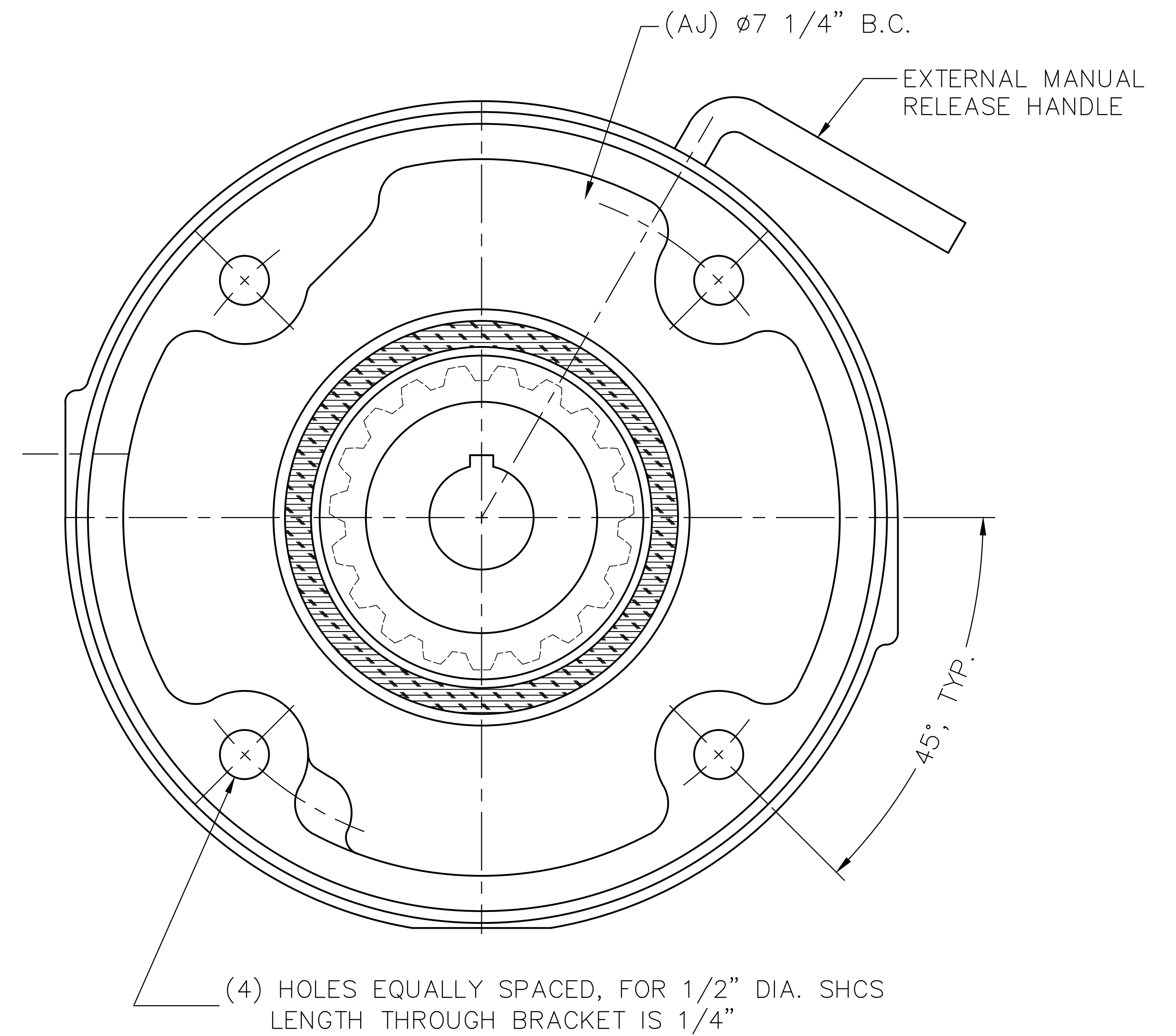
CLEARANCE REQUIRED TO REMOVE COVER

NOTE #1:
THE MAXIMUM SHAFT DIAMETER FOR THIS BRAKE IS $\phi 1-5/8$ " WITH STANDARD KEYWAY. MINIMUM (OR PILOT BORE) DIAMETER IS $\phi 3/4$ ".

*** CALCULATED USING H070394-001

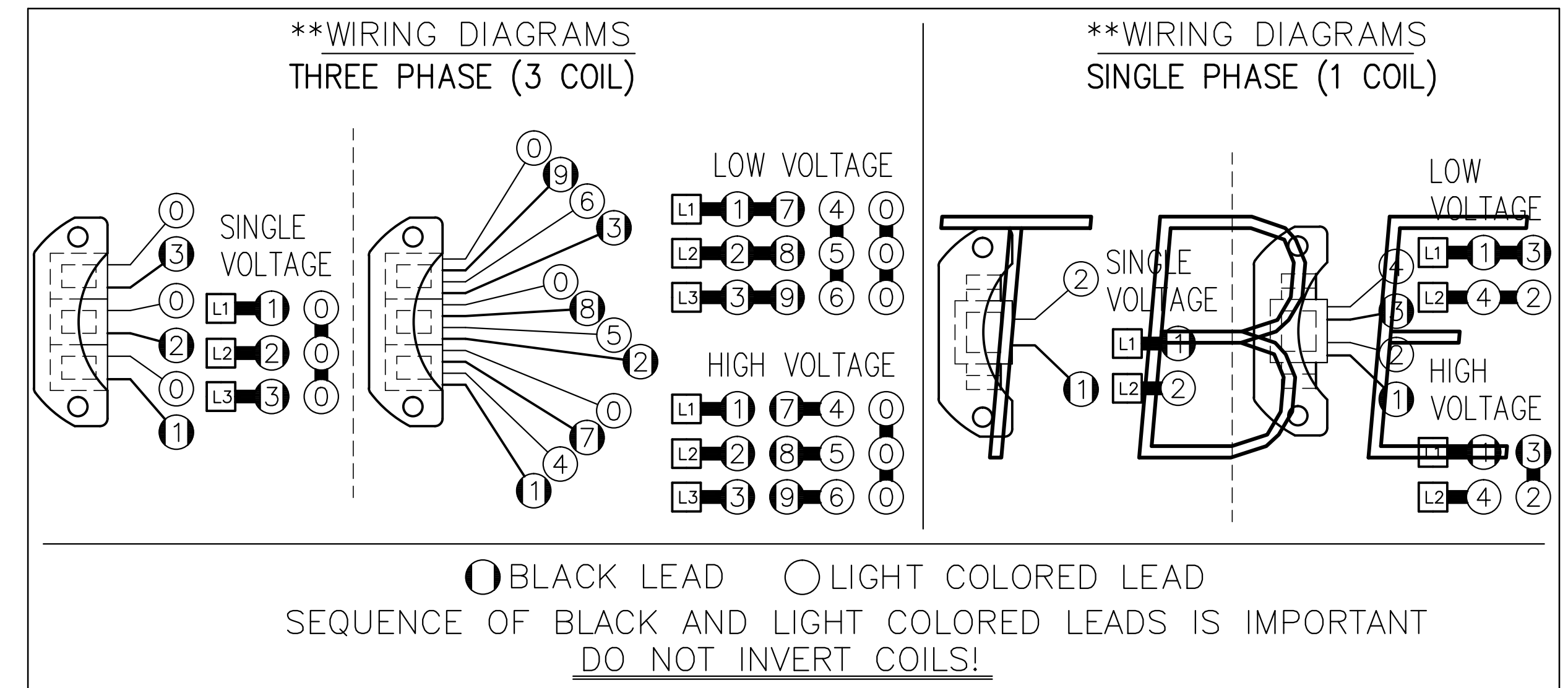
ENCLOSED HOUSING MODEL	TORQUE LB.FT.	No. OF ROTATING FRICTION DISCS	MAX. RPM	*** THERMAL CAPACITY HPS/MIN.	*** INERTIA WK ² LB.FT. ²	DIMENSIONS							ENCLOSURE MATERIAL	
						"C"	"D" $\pm .005$ MAX.	ORIGINAL SETTING	"H"	"N" $\pm 1/32$	"X"	"AC"		"OD"
71010-SC6W	10	1	3600	****	.047	6.91	.100	.040	2.59	1.50	1.00	1.13	9.00	CAST IRON
71015-SC6W	15	1	3600	****	.047	6.91	.100	.040	2.41	1.50	1.00	1.13	9.00	CAST IRON
72025-SC6W	25	2	3600	****	.075	6.91	.100	.040	2.50	2.00	1.50	1.13	9.00	CAST IRON
72035-SC6W	35	2	3600	****	.075	6.91	.100	.040	2.34	2.00	1.50	1.13	9.00	CAST IRON
73050-SC6W	50	3	3600	****	.103	7.47	.100	.050	2.34	2.50	2.00	1.69	9.00	CAST IRON
74075-SC6W	75	4	3600	****	.130	8.03	.100	.060	2.28	3.00	2.50	2.25	9.00	CAST IRON
74105-SC6W	105	4	3600	****	.130	8.03	.100	.060	2.31	3.00	2.50	2.25	9.00	CAST IRON
74125-SC6W	125	4	3600	****	.130	8.03	.080	.060	2.19	3.00	2.50	2.25	9.00	CAST IRON

TBE



SYMBOL KEY:

"C" = ENCLOSURE LENGTH
 "D" = MAGNET AIR GAP
 "H" = INSTALLED SPRING LENGTH
 "N" = HUB LOCATION DIMENSION
 "X" = OVERALL HUB/SHAFT CONTACT LENGTH
 "AC" = EXTERNAL WIRING OUTLET DIMENSION
 "OD" = OUTER DIAMETER



**SEE BULLETIN BK4774 FOR OPERATING, INSTALLATION AND PARTS INSTRUCTIONS

**** CONTACT FACTORY

THIS MATERIAL IS PROPERTY OF DINGS COMPANY. NO RIGHTS ARE GRANTED TO USE SUCH MATERIAL FOR ANY PURPOSE OTHER THAN (1) PRODUCT EVALUATION OR MAINTENANCE OR (2) THE FURNISHING OF SERVICES AND SUPPLIES TO THE DINGS COMPANY.

TITLE: OUTLINE DRAWING, 70 SERIES BRAKE (8700)
 IP56 (NEMA 4X) WITH HUB SEAL; (S7SC6W)

TOLERANCE UNLESS OTHERWISE NOTED
 .000 \pm FRACTIONS \pm
 .00 ANGLES \pm

DRN BY: DBM
 DATE: 10-16-13

CHKD BY:
 SCALE: FULL

4740 WEST ELECTRIC AVE.
 MILWAUKEE, WISCONSIN 53219 U.S.A.

DINGS DYNAMICS

REFER TO: CAD FILE: L070464-1

DRAWING NO.: L070464

SHEET: 1 OF 1

REV. NO.:

REV	CHG#	DATE	BY	REVISION