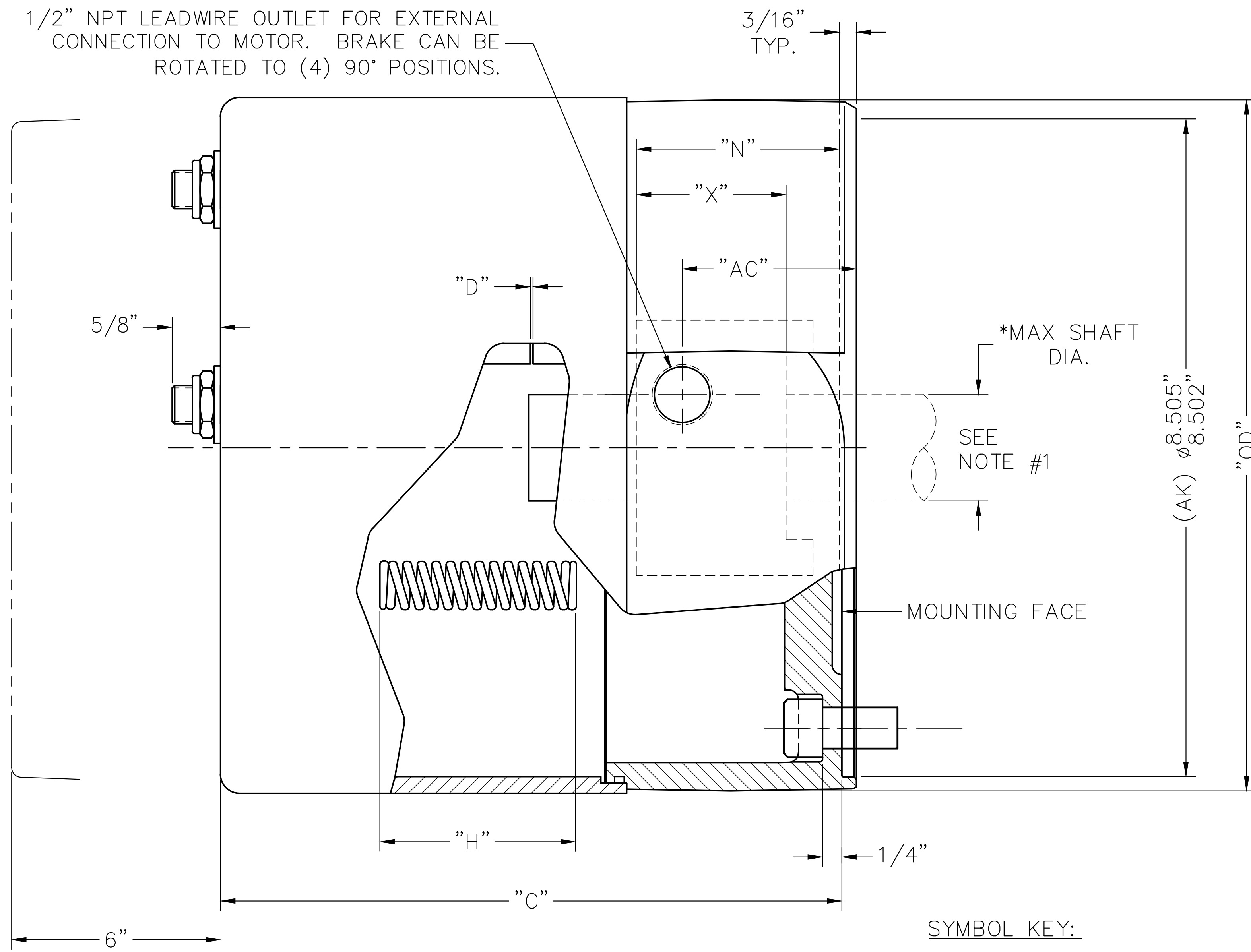


1/2" NPT LEADWIRE OUTLET FOR EXTERNAL CONNECTION TO MOTOR. BRAKE CAN BE ROTATED TO (4) 90° POSITIONS.



CLEARANCE REQUIRED TO REMOVE COVER

NOTE #1:
THE MAXIMUM SHAFT DIAMETER FOR THIS BRAKE IS $\phi 1-5/8$ " WITH STANDARD KEYWAY. MINIMUM (OR PILOT BORE) DIAMETER IS $\phi 3/4$ ".

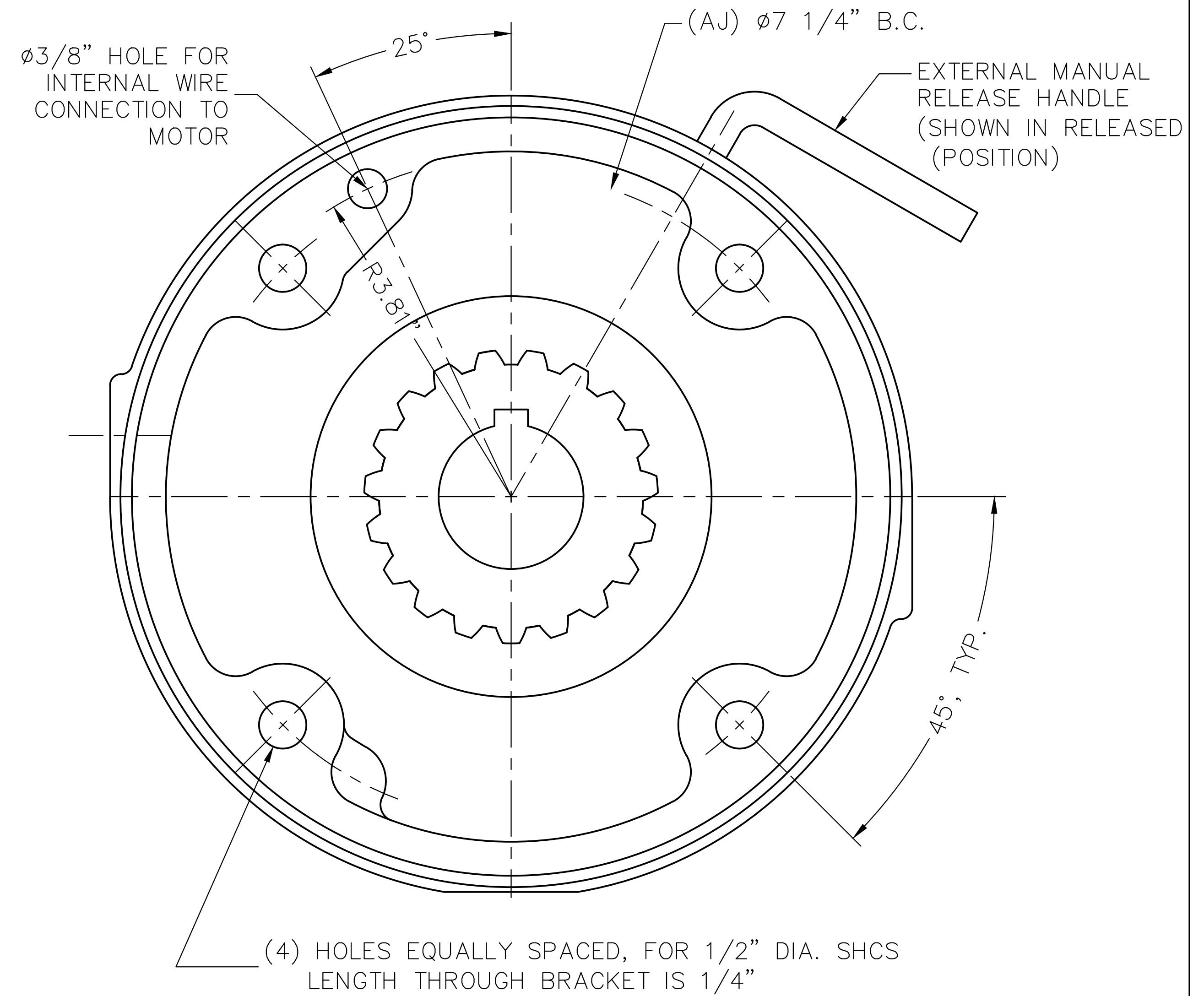
SYMBOL KEY:

"C" = ENCLOSURE LENGTH
 "D" = MAGNET AIR GAP
 "H" = INSTALLED SPRING LENGTH
 "N" = HUB LOCATION DIMENSION
 "X" = OVERALL HUB/SHAFT CONTACT LENGTH
 "AC" = EXTERNAL WIRING OUTLET DIMENSION
 "OD" = OUTER DIAMETER

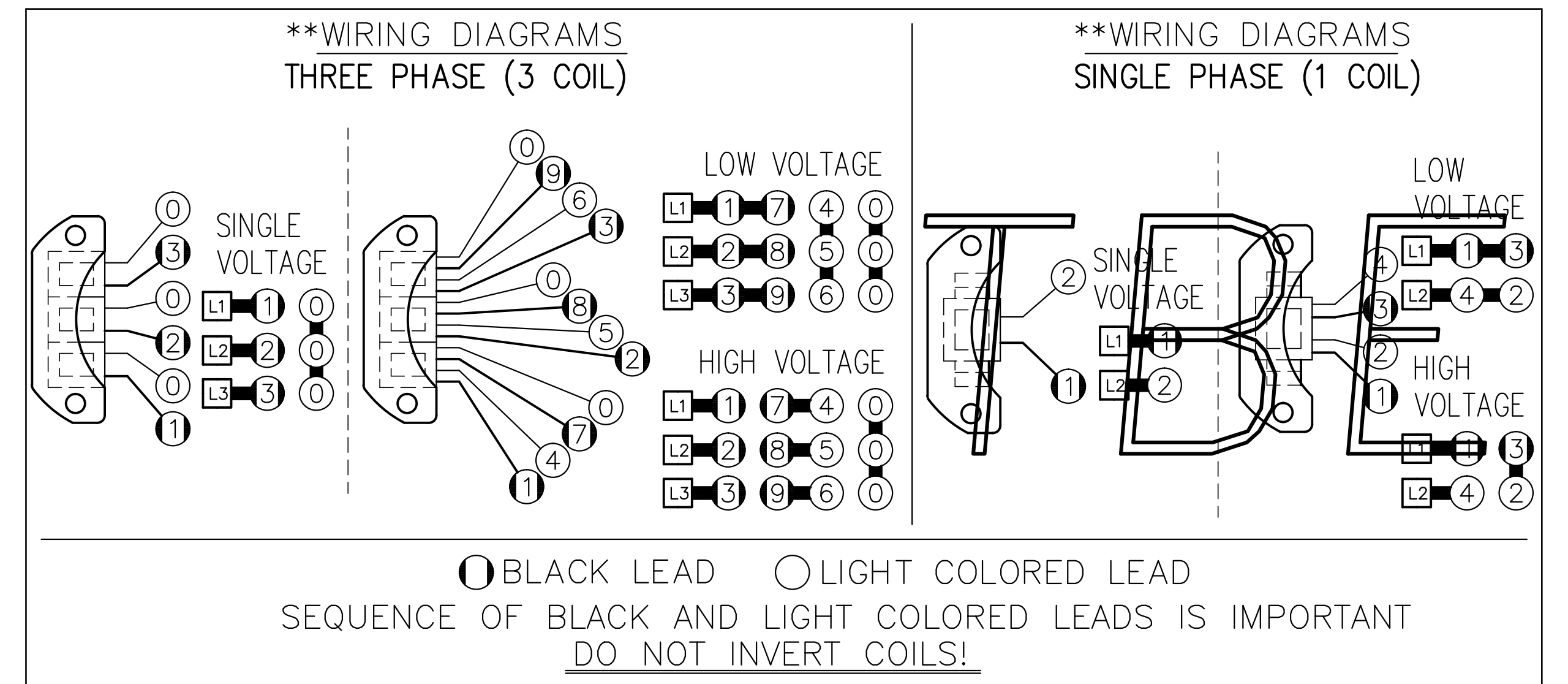
*** CALCULATED USING H070394-001

ENCLOSED HOUSING MODEL	TORQUE LB.FT.	No. OF ROTATING FRICTION DISCS	MAX. RPM	*** THERMAL CAPACITY HPS/MIN.	*** INERTIA WK ² LB.FT. ²	DIMENSIONS							ENCLOSURE MATERIAL	
						"C"	"D" $\pm .005$ MAX.	ORIGINAL SETTING	"H"	"N" $\pm 1/32$	"X"	"AC"		"OD"
71010-EC41	10	1	3600	****	.047	6.91	.100	.040	2.59	1.50	1.00	1.13	9.00	CAST IRON
71015-EC41	15	1	3600	****	.047	6.91	.100	.040	2.41	1.50	1.00	1.13	9.00	CAST IRON
72025-EC41	25	2	3600	****	.075	6.91	.100	.040	2.50	2.00	1.50	1.13	9.00	CAST IRON
72035-EC41	35	2	3600	****	.075	6.91	.100	.040	2.34	2.00	1.50	1.13	9.00	CAST IRON
73050-EC41	50	3	3600	****	.103	7.47	.100	.050	2.34	2.50	2.00	1.69	9.00	CAST IRON
74075-EC41	75	4	3600	****	.130	8.03	.100	.060	2.28	3.00	2.50	2.25	9.00	CAST IRON
74105-EC41	105	4	3600	****	.130	8.03	.100	.060	2.31	3.00	2.50	2.25	9.00	CAST IRON
74125-EC41	125	4	3600	****	.130	8.03	.080	.060	2.19	3.00	2.50	2.25	9.00	CAST IRON

TBE



(4) HOLES EQUALLY SPACED, FOR 1/2" DIA. SHCS LENGTH THROUGH BRACKET IS 1/4"



**SEE BULLETIN BK4772 FOR OPERATING, INSTALLATION AND PARTS INSTRUCTIONS

**** CONTACT FACTORY

THIS MATERIAL IS PROPERTY OF DINGS COMPANY. NO RIGHTS ARE GRANTED TO USE SUCH MATERIAL FOR ANY PURPOSE OTHER THAN (1) PRODUCT EVALUATION OR MAINTENANCE OR (2) THE FURNISHING OF SERVICES AND SUPPLIES TO THE DINGS COMPANY.

TITLE: OUTLINE DRAWING, 70 SERIES BRAKE (8700)
 IP41 (NEMA 2) WITHOUT HUB SEAL; (S7EC41)

TOLERANCE UNLESS OTHERWISE NOTED
 .000 \pm FRACTIONS \pm
 .00 ANGLES \pm
 .00 \pm

DRN BY: DBM
 DATE: 10-15-13
 SCALE: FULL

CHD BY:
 DATE:
 SCALE:

4740 WEST ELECTRIC AVE.
 MILWAUKEE, WISCONSIN 53219 U.S.A.

DRAWING NO. L070458
 SHEET 1 OF 1

REFER TO CAD FILE: L070458-1

REV	CHG#	DATE	BY	REVISION